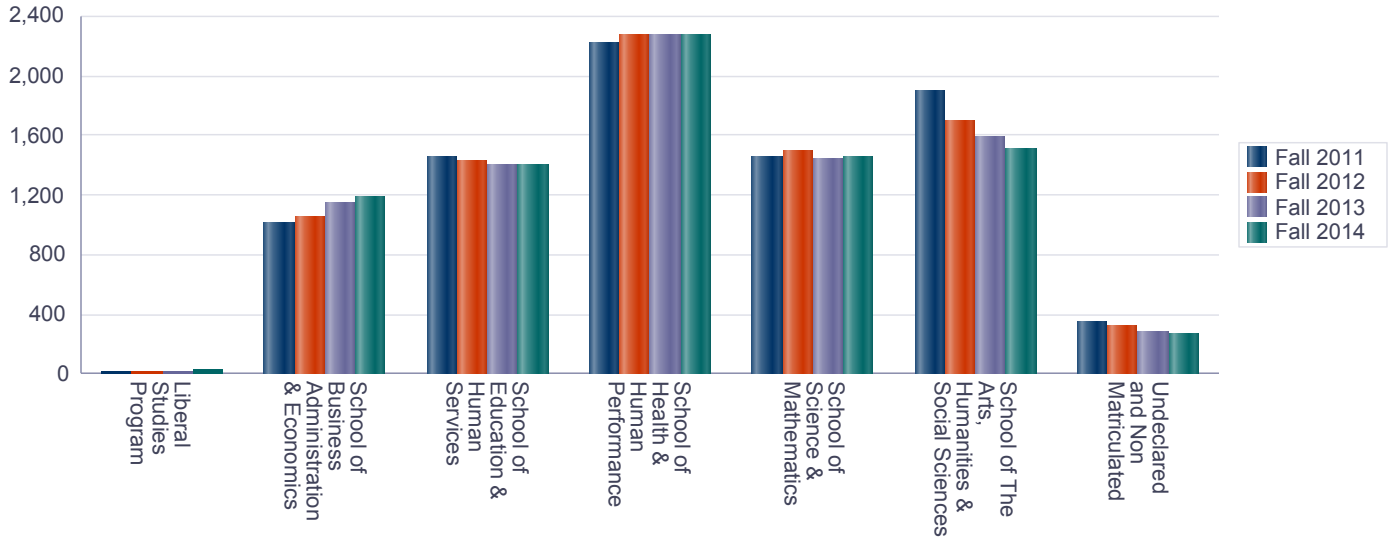


Enrollment

College



	Fall 2011	Fall 2012	Fall 2013	Fall 2014
Total - ALL Majors*	10,552	10,167	9,838	9,675
School of Business Administration & Economics	1,075	1,111	1,224	1,270
School of Education & Human Services	1,519	1,493	1,450	1,456
School of Health & Human Performance	2,422	2,514	2,531	2,535
School of Science & Mathematics	1,596	1,632	1,579	1,585
School of The Arts, Humanities & Social Sciences	2,150	1,936	1,820	1,740
Liberal Studies Program	24	20	13	27
Undeclared and Non Matriculated	1,766	1,461	1,221	1,062

*Includes Undergraduate and Graduate 1st Majors, 2nd Majors, Intents, etc. resulting in a duplicated student count at the College and School levels and in Departments that offer more than 1 major

Note: Undeclared and Non Matriculated counts include Certificate seeking students

	Fall 2011	Fall 2012	Fall 2013	Fall 2014
Total - ALL Minors**	1,292	1,393	1,553	1,521
School of Business Administration & Economics	102	148	193	183
School of Education & Human Services	100	87	126	142
School of Health & Human Performance	148	165	162	173
School of Science & Mathematics	299	338	385	403
School of The Arts, Humanities & Social Sciences	596	624	661	593
General Education Division	47	31	26	27

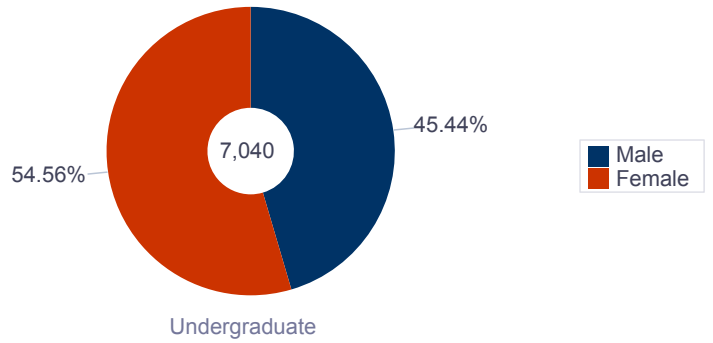
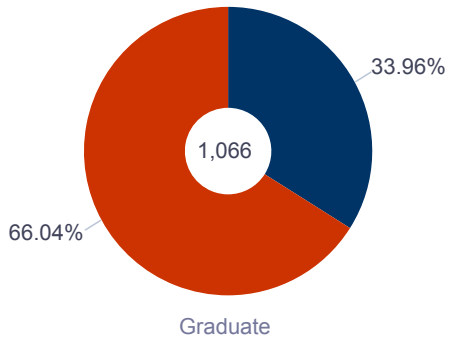
**Includes Undergraduate 1st Minors, 2nd Minors, etc. resulting in a duplicated student count at the College and School levels and in Departments that offer more than 1 minor

Enrollment

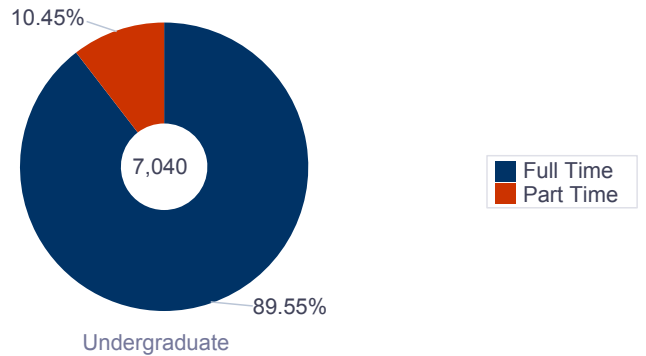
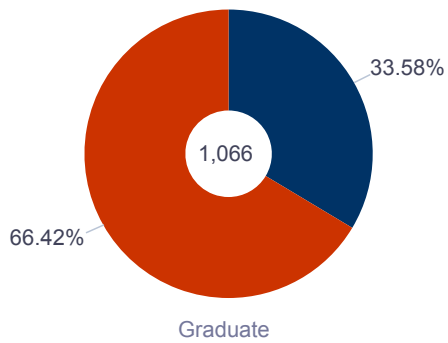
College

Term: Fall 2014

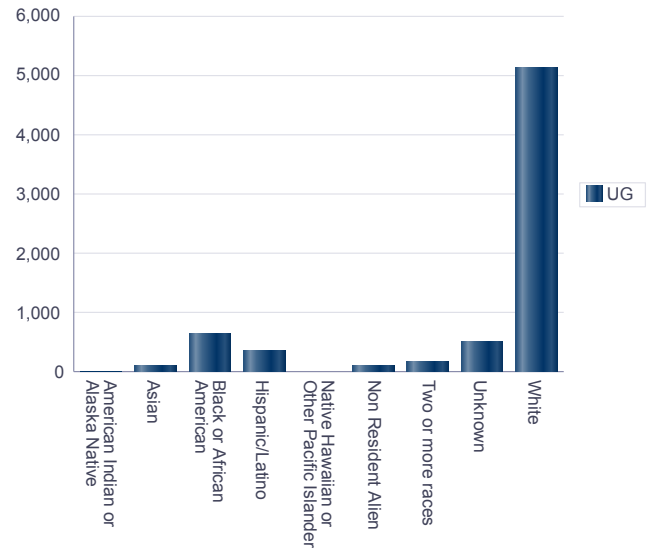
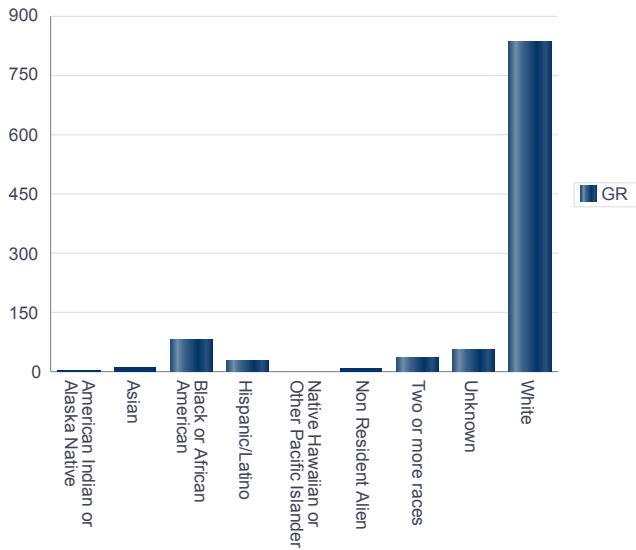
Total Enrollment : 8,106



Male
Female



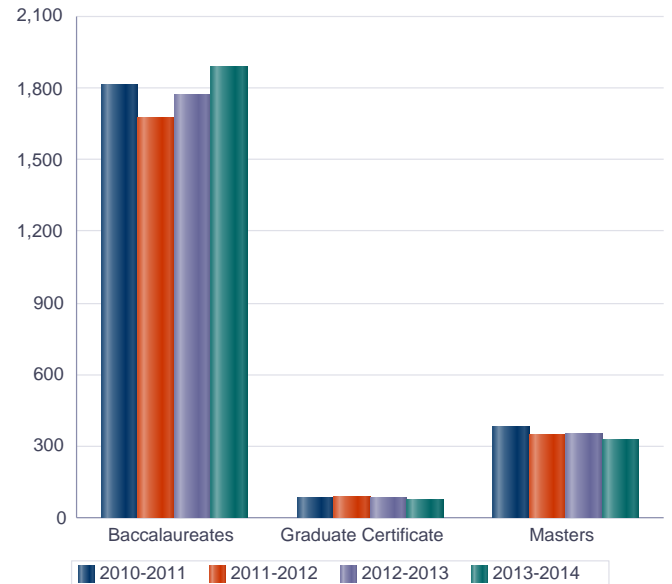
Full Time
Part Time



Degrees Awarded

College

	2010-2011	2011-2012	2012-2013	2013-2014
Total College	2,275	2,107	2,211	2,284
Baccalaureates	1,813	1,668	1,771	1,885
Graduate Certificate	83	89	83	74
Masters	379	350	357	325

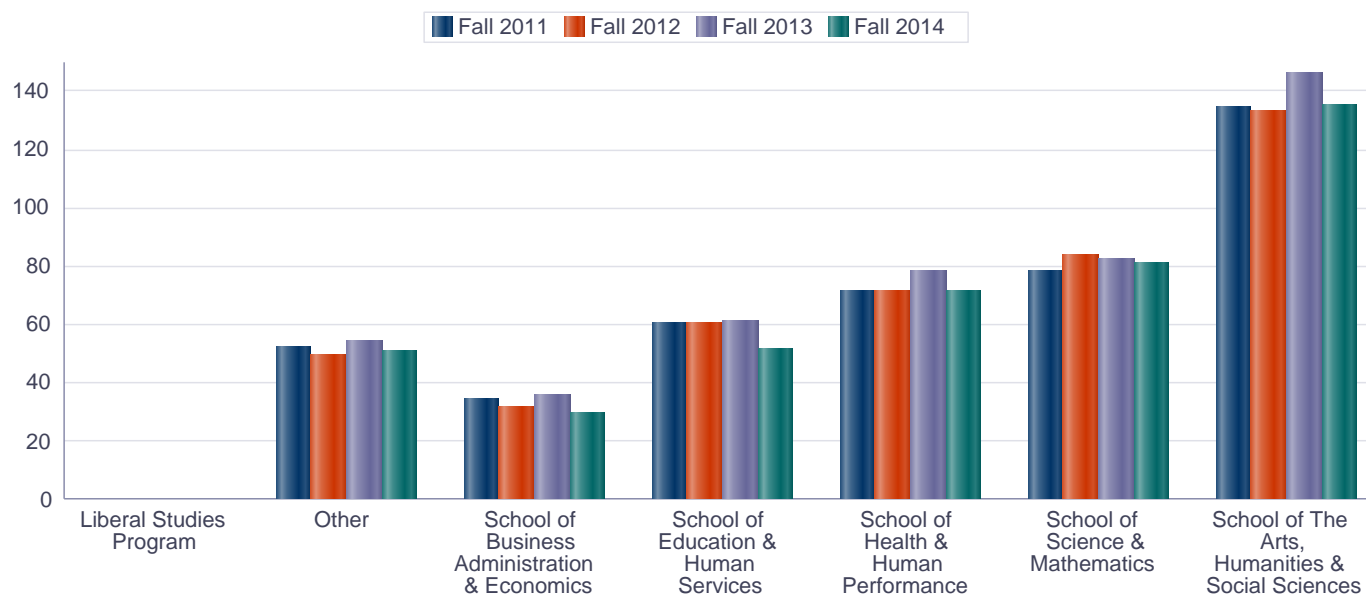


		2010-2011	2011-2012	2012-2013	2013-2014
Total College		2,275	2,107	2,211	2,284
School of Business Administration and Economics	Baccalaureates	288	252	241	287
	Masters	11	14	13	16
	<i>Subtotal</i>	299	266	254	303
School of Education and Human Services	Baccalaureates	170	172	191	208
	Graduate Certificate	83	89	83	74
	Masters	207	216	185	196
	<i>Subtotal</i>	460	477	459	478
School of Health and Human Performance	Baccalaureates	481	475	556	610
	Masters	55	42	65	43
	<i>Subtotal</i>	536	517	621	653
School of Science and Mathematics	Baccalaureates	312	289	337	301
	Masters	30	20	29	13
	<i>Subtotal</i>	342	309	366	314
School of The Arts, Humanities and Social Sciences	Baccalaureates	562	480	446	479
	Masters	62	45	56	50
	<i>Subtotal</i>	624	525	502	529
General Education Division	Masters	14	13	9	7
	<i>Subtotal</i>	14	13	9	7

Faculty

College

Instructional FTE



Instructional FTE and Count

	Fall 2011		Fall 2012		Fall 2013		Fall 2014	
	FTE	Count	FTE	Count	FTE	Count	FTE	Count
Total College*	431.9	647	428.6	666	458.5	675	418.8	636
School of The Arts, Humanities & Social Sciences	134.7	202	132.7	206	146.0	214	134.9	200
School of Science & Mathematics	78.2	108	83.5	114	82.6	111	81.1	108
School of Health & Human Performance	71.4	115	71.2	122	78.4	124	71.2	114
School of Education & Human Services	60.6	100	60.6	105	61.2	101	51.2	93
School of Business Administration & Economics	34.7	51	31.3	47	35.6	51	29.6	49
Other	52.3	71	49.3	72	54.6	73	50.5	70
Liberal Studies Program					0.1	1	0.2	2

*Represents ALL instructional activity at the College. "Other" includes instructional activity by individuals not assigned to academic departments.

Faculty

College

Total Student Credit Hours, Hours by Instructional FTE

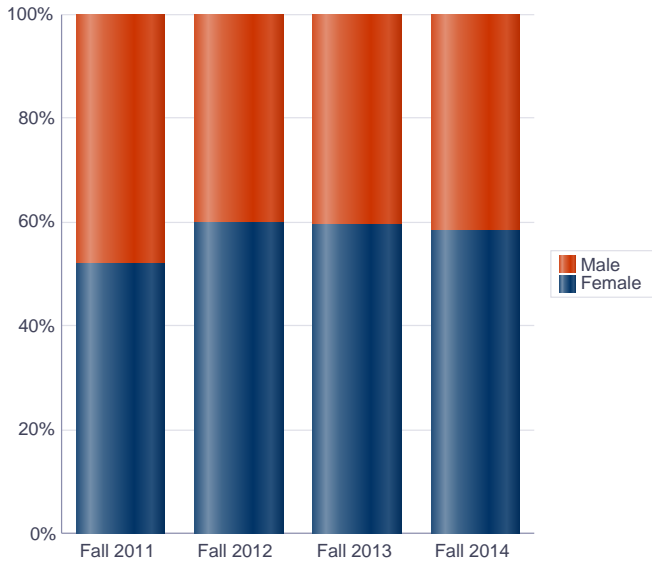
	Fall 2011		Fall 2012		Fall 2013		Fall 2014	
	Hrs	Hrs/FTE	Hrs	Hrs/FTE	Hrs	Hrs/FTE	Hrs	Hrs/FTE
Total College*	106,665.5	247.0	107,549.5	250.9	109,619.5	239.1	105,966.0	253.1
School of The Arts, Humanities & Social Sciences	36,635.5	272.0	35,108.0	264.6	34,292.2	234.8	32,280.0	239.3
School of Science & Mathematics	23,817.0	304.5	24,736.0	296.2	24,568.0	297.5	26,347.0	324.8
School of Health & Human Performance	17,854.5	250.2	18,700.0	262.8	20,187.5	257.6	18,993.5	266.7
School of Education & Human Services	12,232.0	201.7	12,041.0	198.6	11,402.0	186.4	10,337.0	201.9
School of Business Administration & Economics	8,554.0	246.7	9,286.0	296.4	10,116.0	284.3	10,255.0	346.6
Other	7,572.5	144.8	7,678.5	155.6	9,026.8	165.4	7,651.5	151.6
Liberal Studies Program					27.0	216.0	102.0	408.0

*Represents ALL instructional activity at the College. "Other" includes instructional activity by individuals not assigned to academic departments.

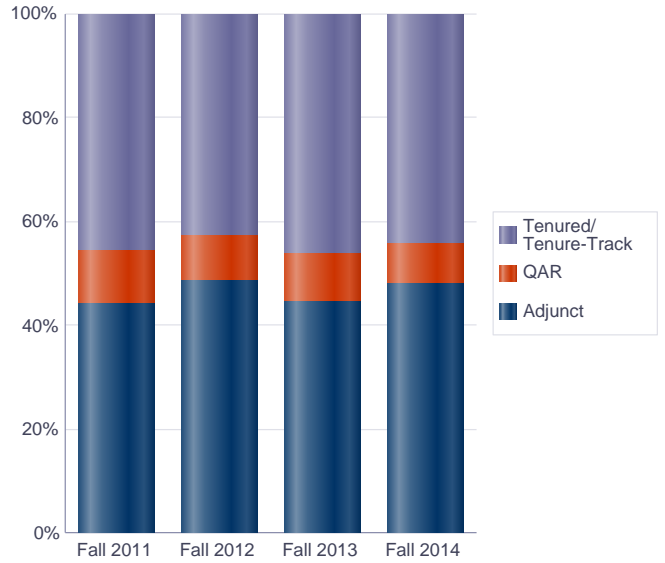
Faculty

College

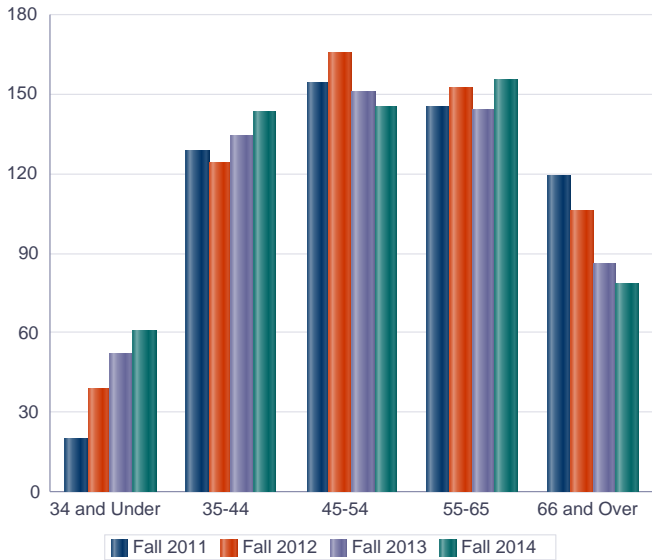
Gender



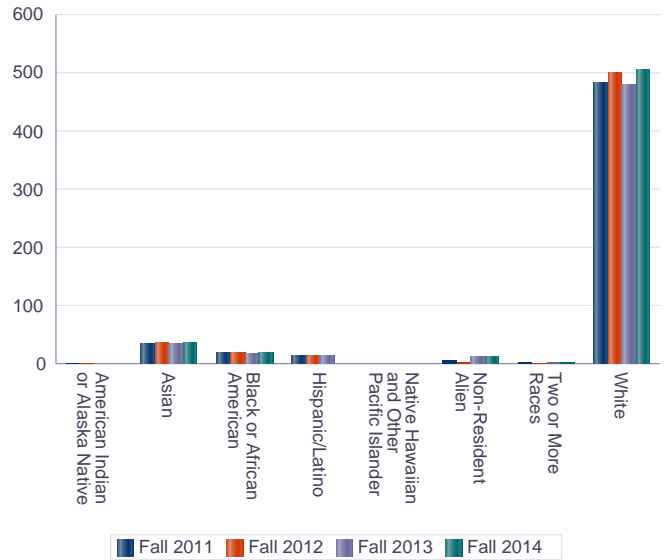
Faculty Type



Age Range



Race/Ethnicity



Faculty

College

		Fall 2011	Fall 2012	Fall 2013	Fall 2014
Total College by Faculty Type		566	586	567	582
School of The Arts, Humanities & Social Sciences	Tenured/ Tenure-Track	103	102	103	108
	QAR	17	16	16	14
	Adjunct	82	85	79	79
	<i>Subtotal</i>	<i>202</i>	<i>203</i>	<i>198</i>	<i>201</i>
School of Science & Mathematics	Tenured/ Tenure-Track	66	64	64	72
	QAR	5	7	5	4
	Adjunct	35	41	37	38
	<i>Subtotal</i>	<i>106</i>	<i>112</i>	<i>106</i>	<i>114</i>
School of Health & Human Performance	Tenured/ Tenure-Track	45	43	47	44
	QAR	10	12	18	18
	Adjunct	56	59	49	51
	<i>Subtotal</i>	<i>111</i>	<i>114</i>	<i>114</i>	<i>113</i>
School of Education & Human Services	Tenured/ Tenure-Track	41	44	43	39
	QAR	11	9	7	5
	Adjunct	51	60	52	57
	<i>Subtotal</i>	<i>103</i>	<i>113</i>	<i>102</i>	<i>101</i>
School of Business Administration & Economics	Tenured/ Tenure-Track	24	24	26	25
	QAR	2	1	1	1
	Adjunct	18	19	20	25
	<i>Subtotal</i>	<i>44</i>	<i>44</i>	<i>47</i>	<i>51</i>
Liberal Studies Program	Adjunct				2
	<i>Subtotal</i>				<i>2</i>

Fall 2014 Faculty Type

