

School of Science & Mathematics

Enrollment

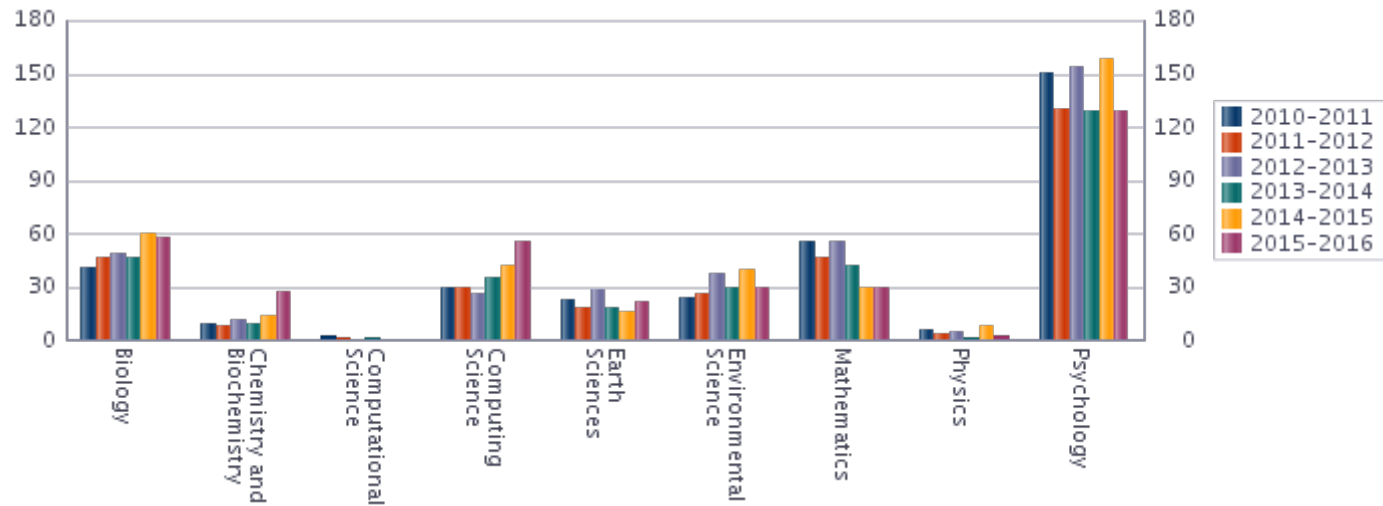
		Fall 2011	Fall 2012	Fall 2013	Fall 2014	Fall 2015	Fall 2016
Total - ALL Majors*		1,596	1,632	1,579	1,585	1,575	1,550
79001300	Biological Sciences	275	266	274	288	270	
	Biology						295
	Medical Technology	43	56	64	57	66	46
79001800	Biochemistry	22	34	48	50	53	47
	Chemistry	41	44	48	47	36	31
79001900	Computer Information Systems	60	68	73	78	88	79
	Computer Science	94	104	115	158	175	181
79002000	Computational Science	8	6	2			
79002600	Earth Science	42	35	30	27	23	23
	Geology	16	20	18	18	17	17
	Meteorology	41	51	45	37	35	36
	Water Resources	14	12	11	14	8	6
79003000	Environmental Science	160	151	137	147	160	163
79006400	Mathematics	223	211	155	134	138	113
79007600	Physics	31	31	36	25	22	29
79007800	Psychology	526	543	523	505	484	484

*Includes Undergraduate and Graduate 1st Majors, 2nd Majors, Intents, etc. resulting in a duplicated student count at the College and School levels and in Departments that offer more than 1 major

		Fall 2011	Fall 2012	Fall 2013	Fall 2014	Fall 2015	Fall 2016
Total - ALL Minors**		299	338	385	402	387	396
79001300	Biological Sciences	56	67	97	139	120	
	Biology						120
79001800	Chemistry	45	54	57	43	45	53
79001900	Computer Information Systems	6	10	11	7	7	7
	Computer Science	6	7	8	8	10	6
79002000	Computational Science	7	8				
79002600	Earth Science	3	2	1	2	5	3
	Environmental Studies	7	5	10	4	4	4
	Geology		1	2	2	2	4
	Meteorology	4	2	4		2	1
	Water Resources	1		1	1	2	1
79003000	Environmental Science	9	11	15	10	8	7
79006400	Mathematics	29	33	30	23	32	27
	Mathematics/Statistics			1			
79007600	Physics	7	5	6	7	5	4
40050000	Pre-Professional Health				1	16	38
79007800	Psychology	119	133	142	156	145	159

**Includes Undergraduate 1st Minors, 2nd Minors, etc. resulting in a duplicated student count at the College and School levels and in Departments that offer more than 1 minor

Degrees Awarded



			2010-2011	2011-2012	2012-2013	2013-2014	2014-2015	2015-2016
Total School - by Level, Dept, Major			342	309	366	314	368	355
Baccalaureates	Biology	Biology	36	40	35	40	42	39
		Medical Technology		3	5	4	11	10
		<i>Subtotal</i>	<i>36</i>	<i>43</i>	<i>40</i>	<i>44</i>	<i>53</i>	<i>49</i>
	Chemistry and Biochemistry	Biochemistry	1	3	2	5	7	18
		Chemistry	8	5	10	4	7	9
		<i>Subtotal</i>	<i>9</i>	<i>8</i>	<i>12</i>	<i>9</i>	<i>14</i>	<i>27</i>
	Computational Science	Computational Science	1	1		2		
		<i>Subtotal</i>	<i>1</i>	<i>1</i>		<i>2</i>		
	Computing Science	Computer Information Systems	9	12	10	16	18	25
		Computer Science	21	18	16	19	24	31
		<i>Subtotal</i>	<i>30</i>	<i>30</i>	<i>26</i>	<i>35</i>	<i>42</i>	<i>56</i>

Degrees Awarded

	Earth Sciences	Earth Science	10	6	6	8	6	8
		Geology	2	2	4	4	5	2
		Meteorology	10	9	16	6	4	12
		Water Resources	1	1	3		1	
		<i>Subtotal</i>	<i>23</i>	<i>18</i>	<i>29</i>	<i>18</i>	<i>16</i>	<i>22</i>
	Environmental Science	Environmental Science	23	22	28	27	32	24
		<i>Subtotal</i>	<i>23</i>	<i>22</i>	<i>28</i>	<i>27</i>	<i>32</i>	<i>24</i>
	Mathematics	Mathematics	45	42	49	38	22	23
		<i>Subtotal</i>	<i>45</i>	<i>42</i>	<i>49</i>	<i>38</i>	<i>22</i>	<i>23</i>
	Physics	Physics	6	4	5	2	8	3
		<i>Subtotal</i>	<i>6</i>	<i>4</i>	<i>5</i>	<i>2</i>	<i>8</i>	<i>3</i>
	Psychology	Psychology	139	121	148	126	155	121
		<i>Subtotal</i>	<i>139</i>	<i>121</i>	<i>148</i>	<i>126</i>	<i>155</i>	<i>121</i>
	<i>Subtotal</i>		<i>312</i>	<i>289</i>	<i>337</i>	<i>301</i>	<i>342</i>	<i>325</i>
Masters	Biology	Biology	5	3	9	3	7	9
		<i>Subtotal</i>	<i>5</i>	<i>3</i>	<i>9</i>	<i>3</i>	<i>7</i>	<i>9</i>
	Computational Science	Computational Science	2					
		<i>Subtotal</i>	<i>2</i>					
	Environmental Science	Environmental Science & Biology	1	4	9	3	8	6
		<i>Subtotal</i>	<i>1</i>	<i>4</i>	<i>9</i>	<i>3</i>	<i>8</i>	<i>6</i>
	Mathematics	Mathematics	11	4	6	4	8	7
		<i>Subtotal</i>	<i>11</i>	<i>4</i>	<i>6</i>	<i>4</i>	<i>8</i>	<i>7</i>
	Psychology	Psychology	11	9	5	3	3	8
		<i>Subtotal</i>	<i>11</i>	<i>9</i>	<i>5</i>	<i>3</i>	<i>3</i>	<i>8</i>
<i>Subtotal</i>		<i>30</i>	<i>20</i>	<i>29</i>	<i>13</i>	<i>26</i>	<i>30</i>	

Faculty

	1415				1516				1617			
	N	FacFTE	SCH	SCH/FacFTE	N	FacFTE	SCH	SCH/FacFTE	N	FacFTE	SCH	SCH/FacFTE
BIOLOGY	10	10.0	4380	438.0	10	9.2	5067	552.8	12	10.4	5445	524.1
Tenure/Tenure Track	9	9.0	3708	412.0	9	9.0	4343	482.6	10	10.0	4494	449.4
QAR	1	1.0	672	672.0				0.0				0.0
Adjunct				0.0	1	0.2	724	4343.1	2	0.4	951	2438.5
CHEMISTRY	9	9.0	3324	369.3	8	8.0	3412	426.5	6	5.4	2593	482.4
Tenure/Tenure Track	8	8.0	2912	364.0	6	6.0	2472	412.0	4	4.0	1797	449.3
QAR	1	1.0	412	412.0	2	2.0	940	470.0	1	1.0	580	580.0
Adjunct				0.0				0.0	1	0.4	216	576.0
COMPUTATIONAL SCIENCES	1	0.3	162	648.0	1	0.4	195	520.0	1	0.4	162	432.0
Tenure/Tenure Track				0.0				0.0				0.0
Adjunct	1	0.3	162	648.0	1	0.4	195	520.0	1	0.4	162	432.0
COMPUTER SCIENCE	15	10.5	3197	305.7				0.0				0.0
Tenure/Tenure Track	8	8.0	1714	214.3				0.0				0.0
QAR	1	1.0	310	310.0				0.0				0.0
Adjunct	6	1.5	1173	804.4				0.0				0.0
COMPUTING SCIENCES				0.0	15	10.5	3330	318.4	15	10.7	2875	269.5
Tenure/Tenure Track				0.0	8	8.0	2098	262.3	8	8.0	1803	225.4
QAR				0.0	1	1.0	216	216.0	1	1.0	190	190.0
Adjunct				0.0	6	1.5	1016	696.7	6	1.7	882	529.2
DEAN OF SCIENCE & MATH	1	0.3	56	192.0				0.0				0.0
Adjunct	1	0.3	56	192.0				0.0				0.0

Faculty

	1415				1516				1617			
	N	FacFTE	SCH	SCH/FacFTE	N	FacFTE	SCH	SCH/FacFTE	N	FacFTE	SCH	SCH/FacFTE
EARTH SCIENCE	9	8.3	2528	304.9	10	9.4	3267	346.9	9	8.3	2852	345.7
Tenure/Tenure Track	8	8.0	1835	229.4	9	9.0	2551	283.4	8	8.0	2297	287.1
QAR				0.0				0.0				0.0
Adjunct	1	0.3	693	2375.7	1	0.4	716	1718.3	1	0.3	555	2220.0
ENVIRONMENTAL SCIENCE	8	6.4	1551	241.8	9	7.0	1102	157.4	8	5.6	1123	200.2
Tenure/Tenure Track	6	6.0	1247	207.8	6	6.0	833	138.8	5	5.0	563	112.6
QAR				0.0	1	0.5	33	66.0				0.0
Adjunct	2	0.4	304	732.5	2	0.5	236	472.0	3	0.6	560	918.0
MATHEMATICS	24	13.8	4312	313.6	25	15.6	5245	336.6	30	15.8	4912.5	311.1
Tenure/Tenure Track	10	10.0	1687	168.7	10	10.0	1721	172.1	10	10.0	1251	125.1
QAR	1	1.0	387	387.0	1	1.0	217	217.0	1	1.0	200	200.0
Adjunct	13	2.8	2238	813.8	14	4.6	3307	721.7	19	4.8	3461.5	722.4
PHYSICS	6	4.4	957	218.7	5	4.3	759	178.6	5	4.3	915	215.3
Tenure/Tenure Track	4	4.0	605	151.3	4	4.0	539	134.8	4	4.0	635	158.8
QAR				0.0				0.0				0.0
Adjunct	2	0.4	352	938.7	1	0.3	220	880.0	1	0.3	280	1120.0
PSYCHOLOGY	20	15.1	5610	370.9	25	16.5	5760	349.1	20	15.9	5912	370.9
Tenure/Tenure Track	14	14.0	4314	308.1	14	14.0	3573	255.2	13	13.0	3744	288.0
QAR				0.0	1	1.0	399	399.0	2	2.0	860	430.0
Adjunct	6	1.1	1296	1152.0	10	1.5	1788	1192.0	5	0.9	1308	1395.2
Grand Total	103	78.0	26077	334.5	108	80.7	28137	348.5	106	76.6	26789.5	349.5